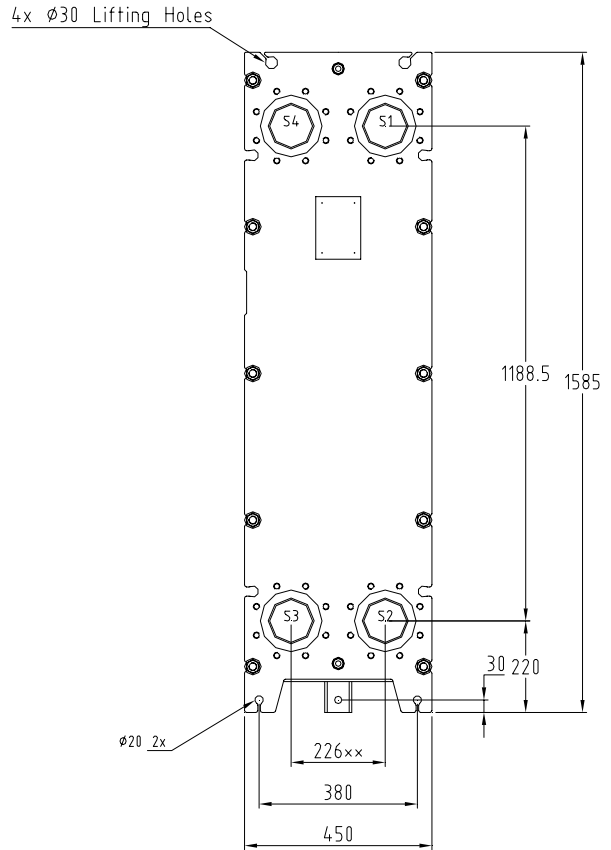
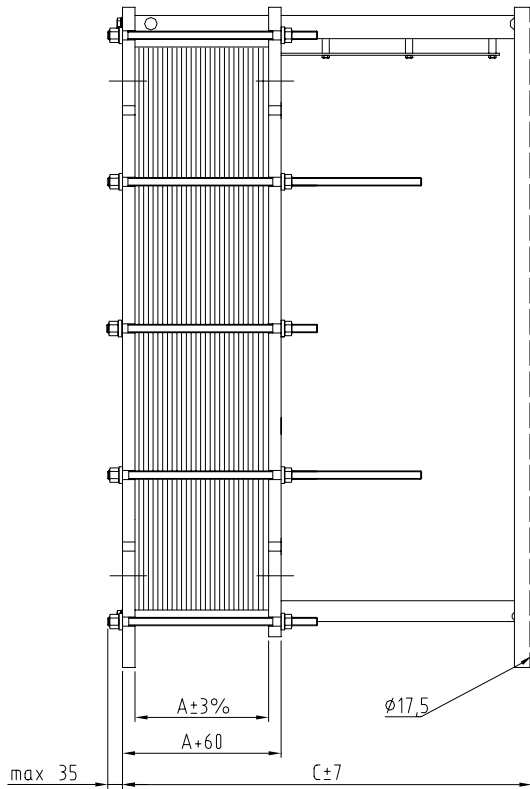


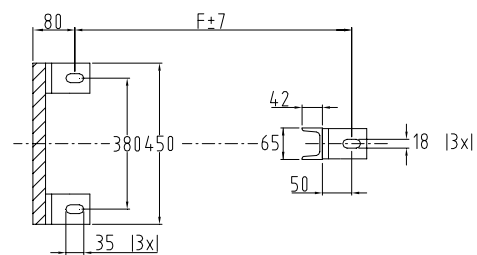


PLATE HEAT EXCHANGER
GX-42N Non CE
 DIMENSIONS, MM



xx For ANSI B 16.5 #150lb C/C=231

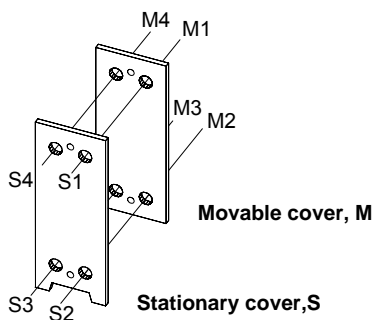
For fixing to ground use for example L80x80x12 (not supplied)



Only for 3.3 (Non CE) applications

The Plate Heat Exchanger has 4 connections as standard and should be installed with min. 600 mm space on both sides for service work.

Subject to alterations without prior notice.



Available connections.

Conn. fits	D	K	Threaded	No. of bolts
DIN x	148	180	M16x25	8
ANSI x	148	190.5	5/8"UNCx25	8
JIS 10K	148	175	M16x25	8
JIS 5K	143	165	M16x25	8

x EN1092-1 PN 10/16
 ANSI B 16.5 # 150lb



PLATE HEAT EXCHANGER
GX-42N Non CE
DIMENSIONS, MM

Standard connection dimension	DN100								
Restrictions for 3.3 (Non CE) applications: Max allowed pressure*volume (bar*litre) for different media groups (one side volume). For information: Volume per channel is 1,33 litre (GX)	LIQUID (group 1): 200 (bar*litre) LIQUID (group 2), for water ≤110°C: 10000 (bar*litre) GAS (group 1): 25 (bar*litre) GAS (group 2), for water >110°C: 50 (bar*litre)								
Tightening bolt	M20								
No. of long tightening bolts (T _L)	4								
No. of short tightening (T _S)	6								
Cover thickness	30 mm								
Weight of guiding bar	5 kg/m								
Weight of tightening bolt	2,0 kg/m								
A-dimension	3,8*n mm								
C-dimension	LG + 36 mm								
F-dimension	LG + 6 mm								
Weight plate+gasket (W)	<table style="display: inline-table; border: none;"> <tr> <td style="padding-right: 10px;">AISI 304/316 0,5 mm</td> <td>2,1 kg</td> </tr> <tr> <td>AISI 304/316 0,6 mm</td> <td>2,5 kg</td> </tr> <tr> <td>Titanium 0,5 mm</td> <td>1,3 kg</td> </tr> <tr> <td>Titanium 0,6 mm</td> <td>1,6 kg</td> </tr> </table>	AISI 304/316 0,5 mm	2,1 kg	AISI 304/316 0,6 mm	2,5 kg	Titanium 0,5 mm	1,3 kg	Titanium 0,6 mm	1,6 kg
AISI 304/316 0,5 mm	2,1 kg								
AISI 304/316 0,6 mm	2,5 kg								
Titanium 0,5 mm	1,3 kg								
Titanium 0,6 mm	1,6 kg								
Weight Frame	353+n*W kg								

Max No of plates	LT _L	LG	C	F
20	250	400	436	406
27	375	400	436	406
42	375	600	636	606
60	500	600	636	606
103	750	1000	1036	1006
125	1000	1000	1036	1006
142	1000	1350 ¹⁾	1386	1356
182	1250	1350 ¹⁾	1386	1356
215	1500	1550 ¹⁾	1586	1556

LT_L = Length of long tightening bolt, based on 6,1 x n + 128

LG = Length of guiding bar, based on 6,1 x n + 235

n = number of plates

1) LG>1000 mm reinforced guiding bar.

Total max no. of plates	
AISI 304/316 0,5 mm	232

All data is based on plates with material AISI 304/316 and thickness 0,5 mm.